

Deep Vision Laboratory

Lab Feature

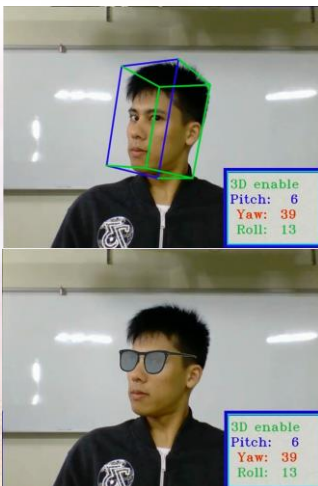
Deep Vision Lab is dedicated to research topics of computer vision, machine learning, and deep learning.

Research Topics

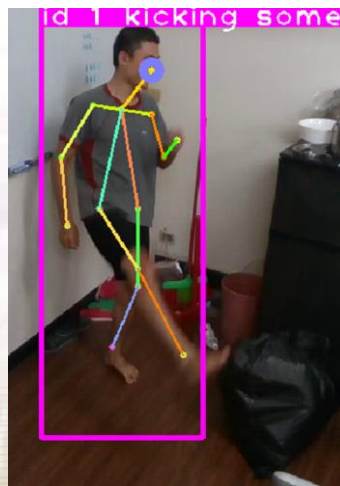
- 3D Face Reconstruction from 2D Images, Head Pose Estimation
- Skeleton Detection, Object Detection, Object Tracking, Action Recognition
- Automatic Parking Using Deep Reinforcement Learning

Projects

- Deep Learning Based 3D Face Reconstruction and Its Application to Face Recognition (MOST)
- Deep Learning Based Patient Safety Prediction (ITRI)
- Predictive Study of Cognitive Impairment in Alzheimer's Patients via fMRI (KMUH)



Virtual Try-On



Action Recognition



3D Face
Reconstruction